

Analysis of compressive strength of concrete by effective replacement of coarse aggregate with ceramic waste

Saswat Suman Sharma¹, Rajesh Kumar Sahu²

^{1,2}Senior Lecturer, Civil Engineering Department, Padmashree Krutartha Acharya College of Engineering, Bargarh, Odisha, India

Date of Submission: 01-05-2023

Date of Acceptance: 08-05-2023

ABSTRACT--In both developed and undeveloped countries it has become a technical challenge to design low cost, durable and sustainable concrete. The main focus of this research work is to study the strength of concrete by effectively replacing coarse aggregate with ceramic wastes. According to a statistical record tiles industry of the world, India stands in second position with 7.97% contribution in tile manufacturing. These industries produce an average of 20-30% waste during its process and thus pose a threat to waste disposal. In order to make an effort towards its waste disposal this research study intends replacing coarse aggregate with ceramic waste in a range of 0%, 5%, 10%, 15% and 20% by weight in M₂₀ grade concrete. Compressive strength tests were conducted on hardened concrete cubes after 3rd, 7th, 14th and 28th day of curing in water. This experiment shows an improvement in concrete compressive properties. The compressive strength after 3rd, 7th, 14th and 28th day was determined by taking 3 cubes for each percentage.

Keywords — sustainable, ceramic waste, compressive strength, durable

I. INTRODUCTION

Concrete can be considered a composite material with composition of crushed stones, fine aggregate and cement as binding material. In an age of rapid growing technology, the demand construction industries have risen. It required to meet the functional, economical and durability stability of any organisation. Ceramic industries are another booming sector and also generate huge amount of waste. During 2012-2017 a growth rate of 4% was registered which results to a value of 13.27 billion squaremetre volume of ceramic consumption. During 2017 it was mainly buoyed by countries like Africa, Europe and US where

there was recovery in construction work. Asia continues to be the largest consumer with 8.98sqm about 68% of total consumption. India standing second to ceramic manufacturing next to China. China being the highest producer of ceramic is currently facing dumping issues. Also, according to an estimate by Indian tile and ceramic industries the global consumption will grow by 3-5% between 2018-2022. The wastes generated by ceramic industries do contribute to environmental problems. One sanitary cluster in India carries out production around 7.2 lakh tonnes of clay per year out of which 21600 tonnes of fired pieces goes to waste due to manufacturing defects.

The need of time has urged us to pay attention to conserve natural resources and to reduce energy used in production. These ceramic wastes can be used in effective replacement of coarse aggregate. These ceramic wastes collected from industries in Bargarh Locality used for the experiment were manually crushed using a tamping rod and passed through IS sieve conforming the size of coarse aggregate.

II. MATERIALS REQUIRED

A. MATERIALS

a) Cement

The cement used in this experiment is pozzolana Portland cement (PPC) of Local brand. Fresh cement of grade 53 conforming to IS 269 was used in this experiment.

TABLE-1
PHYSICAL PROPERTIES OF (PPC)
CEMENT

PROPERTY	IS 269-1989
Specific Gravity	2.90

Consistency	33
Initial setting time (mins)	30
Final Setting time (mins)	600 specified

b) Ceramic Waste

The ceramic waste coming out of the industries are generally in powder form. The waste generated during the finishing process is estimated to be around 15-30% of the total raw material used. Although this waste is utilised in backfilling but the amount of waste produced is much more than what is used for backfilling process. The disposal of these wastes is a major concern as it requires large areas and it also spoils the aesthetics of the region. Ceramic wastes can be used in concrete for improving the strength and durability. Effectively replacing ceramic to concrete could impart different properties of concrete.

**TABLE-2
CHEMICAL COMPOSITION OF CERAMIC WASTE**

Compound Composition	Percentage
SiO ₂	63.29
Al ₂ O ₃	18.29
Fe ₂ O ₃	4.32
CaO	4.46
MgO	0.72
P ₂ O ₅	0.16
K ₂ O	2.18
Na ₂ O	0.75
SO ₃	0.10
Cl-	0.005
TiO ₂	0.61
SrO ₂	0.02
Mn ₂ O ₃	0.05
L.O. I	1.61

c) Aggregates

Fine aggregates-

In this study river sand was used as fine aggregate conforming to IS:383. Sieves were arranged as 4.75 to 150 Micron and fractions were taken.

**TABLE-3
PROPERTIES OF FINE AGGREGATE**

Property	Fine Aggregate
Fineness Modulus	3.28
Specific Gravity	2.65
Bulk Density kg/m ³	1.73

Coarse Aggregate-

Crushed Basalt rock was used conforming IS:383. Sieving through arranged sieves of 20mm to 4.75mm, fractions were considered. The flakiness and elongation were considered well below 15%.

**TABLE-4
PROPERTIES OF COARSE AGGREGATE**

Property	Passing 20mm
Fineness Modulus	7.28
Specific Gravity	2.75
Bulk Density kg/m ³	1.74

d) Water-

It is the most essential component for initialising the chemical reaction. The sample of water taken for this experiment is potable and free from any organic impurities.

III. MIX DESIGN

According to IS 10262-2009, a mix design of M20 was considered for this experiment. The samples taken were of the same design mix.

**TABLE-5
MIX DESIGN PROPORTION FOR M20**

	Water (L)	Cement Kg/m ³	F.A Kg/m ³	C.A (Kg/m ³)
By Wt.	162.75	375.50	555.25	1120.00
By Vol	0.50	1	1.47	2.98

W= WATER, F. A= FINE AGGREGATE, C.A= COARSE AGGREGATE

**TABLE-6
CONCRETE DESIGN PROPORTION**

Sl no.	Concrete type	Concrete design proportion				
		W/C	C (KG)	F.A (KG)	C.A (KG)	C.W (KG)
1	C0	0.50	1.5	2.25	4.5	0
2	C5	0.50	1.5	2.25	4.275	0.225
3	C10	0.50	1.5	2.25	4.05	0.45
4	C15	0.50	1.5	2.25	3.825	0.675
5	C20	0.50	1.5	2.25	3.6	0.9

**IV EXPERIMENTAL SET UP
 METHODOLOGY-**

The process of assessment of ceramic waste to be used as an alternative to coarse aggregates started with the concrete testings. The control concrete contained cement, sand, aggregate and water to a specified content. The replacement has been done in order of 5%, 10%, 15%, 20% with the coarse aggregate proportion. Three cube samples with each of different percentage replacement was compared with standard concrete cube in a controlled environment. The size of the mould was 15 x 15 x 15 cm. The standard and replaced concrete cube were removed from there

mould after 24hrs and immersed in water for curing. The samples were tested for 7,14,28 days for their compressive strength.

Compressive Strength-

The strength of the samples was calculated using a power operated compressive testing machine with a load drop of 35N/mm². Three samples from each batch were tested and the results were noted. A comparative assessment on the properties of design mix concrete and concrete cube with replaced ceramic waste was done at 5%, 10%, 15%, 20% replacements.

**TABLE -7
 COMPRESSIVE STRENGTH OF CUBES
 M20 (7,14,28 DAYS)**

Concrete type	Average compressive strength (kN/mm ²)		
	7 days	14 days	28 days
C0	16.14	22.54	27.89
C5	16.87	23.06	28.16
C10	17.52	23.73	29.46
C15	17.23	23.47	28.70
C20	16.32	22.91	27.60

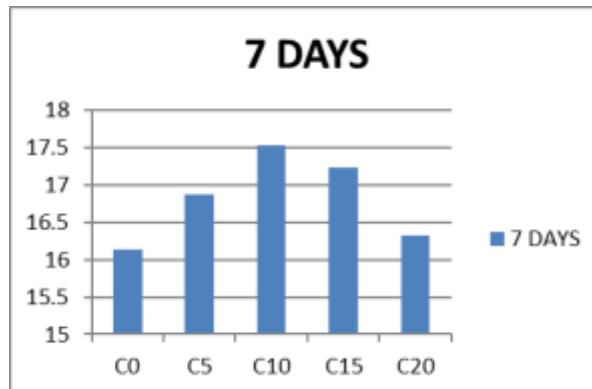


Chart 1: Compressive strength values(in MPa) after 7 days

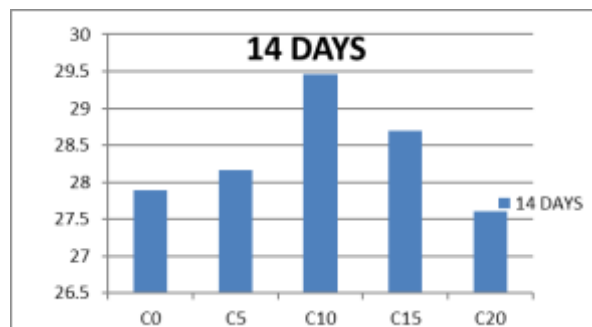


Chart 2: Compressive strength values(in MPa) after 14 days

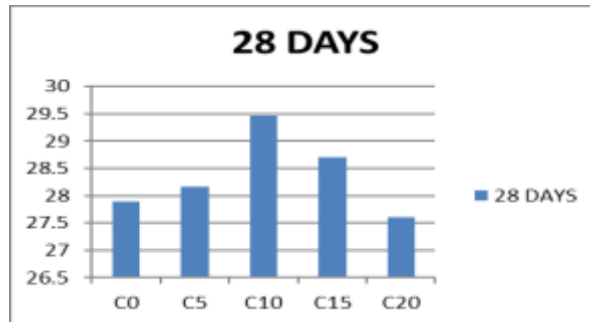


Chart 3: Compressive strength values(in MPa) after 28 days

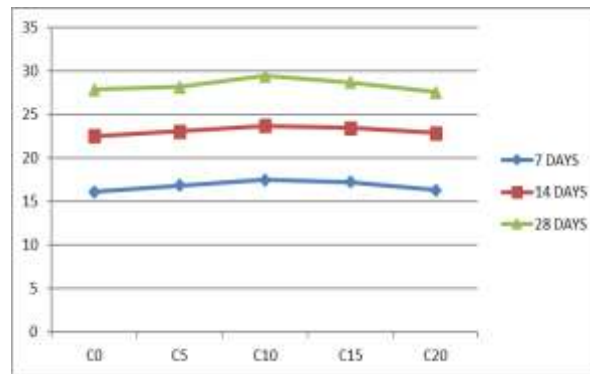


Chart 4: Compressive strength values comparison

V. COST FEASIBILITY

TABLE- 8

COSTS OF MATERIALS

SL NO.	MATERIAL	RATE RS/KG
1	CEMENT (LOCAL)	6.60
2	SAND (LOCAL)	0.30
3	AGGREGATE (LOCAL)	2.00
4	CERAMIC WASTE (LOCAL)	0.20

TABLE – 9

TOTAL COST OF MATERIALS FOR M20 (1:1.47:2.98) PER m³

S l n o	Concr ete type	Concrete design proportion				Total □/m ³	Profit %
		C (KG)	F.A. (KG)	C.A (KG)	C.W (KG)		
1	C0	375.50	555.25	1120.00	0	4996	-
2	C5	375.50	555.25	1064	56	4895	2.00
3	C10	375.50	555.25	1008	112	4794	4.02
4	C15	375.50	555.25	952	168	4693	6.04
5	C20	375.50	555.25	896	224	4615	7.60

VI. CONCLUSION

Our study has demonstrated that there is a significant correlation between the addition of ceramic waste to the strength of concrete. The compressive strength of concrete with 10% replacement of coarse aggregate with ceramic waste has been found to have maximum compressive strength. Further replacement of ceramic waste powder to concrete reduces the compressive strength significantly. It has also been observed that concrete with 10% replacement has reduced the cost of coarse aggregate by 4%. Through our analysis of the literature and data we have shown that ceramic waste has a potential of being a replacement material for cement in concrete.

REFERENCES

- [1]. Ceramic Manufacturing Industry, EUROPEAN COMMISSION, August 2007
- [2]. A. Piccolroaz, D. Bigoni and A. Gajo, An elastoplastic framework for granular materials becoming cohesive through mechanical densification. Part I – small strain formulation. *European Journal of Mechanics A: Solids*, 2006, 25, 334-357.
- [3]. ASTM C 125, Standard Terminology Relating to Concrete and Concrete Aggregate, 1994 Annual Book of ASTM Standards
- [4]. César Medina, M.I. Sánchez de Rojas, Moisés Frías and Andrés Juan, “Using Ceramic Materials in Eco-efficient Concrete and Precast Concrete Products”, Spain
- [5]. C. Medina Martínez, M.I. Guerra Romero, J. M. Morán del Pozo and A. Juan Valdés, “USE OF CERAMIC WASTES IN STRUCTURAL CONCRETES”, 1st Spanish National Conference on Advances in Materials Recycling and Eco – Energy Madrid, 12-13 November 2009
- [6]. David Pearce and Giles Atkinson, “The concept of sustainable development: a evaluation of its usefulness ten years after Brundtland”, CSERGE Working Paper PA98-02
- [7]. D. Bigoni, *Nonlinear Solid Mechanics: Bifurcation Theory and Material Instability*. 2012, Cambridge University Press.
- [8]. Gérard Valenduc, Patricia Vendramin Science, “Technological Innovation and Sustainable Development”, International Conference “Science for a Sustainable Society” Roskilde, 27-29/10/97
- [9]. Hasnat Dewan, “Re-Defining Sustainable Human Development to Integrate Sustainability and Human Development Goals” Thompson Rivers University, Canada.
- [10]. İ.B. TOPÇU And M. CANBAZ, “Utilization of crushed tile as aggregate in concrete”, *Iranian Journal of Science & Technology, Transaction B, Engineering*, Vol. 31, No. B5, pp. 561-565, 2007
- [11]. Philip J. Vergragt, “How Technology Could Contribute to a Sustainable World”, GTI Paper Series, 2006
- [12]. P.K. Mehta, Pozzolanic and cementitious by products as mineral admixtures for concrete, fly ash, silica fume, slag and other mineral by-products in concrete, *ACISP (79)(01)*(1983).
- [13]. Sustainable Development: An Introduction, Internship Series, Volume-I, Centre for Environment Education, 2007
- [14]. “STRATEGY FOR SUSTAINABLE CONSTRUCTION” HM Government, JUNE 2008
- [15]. K. S. Al-Jabri, A. W. Hago, R. Taha, A. S. Alnuaimi and A. H. Al-Saidy “Strength and Insulating Properties of Building Blocks Made from Waste Materials”, *Journal of Materials in Civil Engineering*, 2009, Vol. 21, No. 5, page no: 191-197
- [16]. Fernando and Said “Compressive strength and durability properties of ceramic wastes based concrete”, *Materials and Structures*, 2009, vol. 44, page no: 155-167
- [17]. K. Abdullah, M.W. Hussin, F. Zakaria, R. Muhamad, Z. Abdul Hamid “POFA : A Potential Partial Cement Replacement Material in Aerated Concrete”, *Proceedings of the 6th Asia-Pacific Structural Engineering and Construction Conference*, (APSEC 2006), 2006
- [19]. Weerachart Tangchirapat, Tirasit Saeting, Chai Jaturapitakkul, Kraiwood Kiattikomol, Anek Siripanichgorn “Use of waste ash from palm oil industry in concrete”, *Waste*

- Management, 2007,vol.27, page no: 81–88.
- [20]. Yadav Ishwar Singh, Maneek Kumar and Shweta Goyal, “Laboratory Investigations Of The Properties Of Concrete containing Recycled Plastic Aggregates”, M.Tech Thesis, Thapar University, 2008.
- [21]. Dr. K. Ramadevi, “A STUDY ON PROPERTIES OF CONCRETE WITH CERAMIC WASTE REPLACED FOR FINE AGGREGATE”, International Journal of Civil Engineering and Technology (IJCIET) Volume 8, Issue 8, August 2017, pp. 1730–1737, Article ID: IJCIET_08_08_187
- [22]. Hongwei Song, Ayaz Ahmad, Krzysztof Adam Ostrowski, and Marta Dudek, “Analyzing the Compressive Strength of Ceramic Waste-Based Concrete Using Experiment and Artificial Neural Network (ANN) Approach” Materials (Basel). 2021 Aug; 14(16): 4518.