

Survey Paper on Travel Itinerary Planning Systems

Harsh Jaiswal

Date of Submission: 15-11-2023

Date of Acceptance: 25-11-2023

ABSTRACT

Travel itinerary planning is a crucial aspect of any journey, whether it's a business trip, a vacation, or an adventure. In this comprehensive executive summary, we will explore the significance of effective travel itinerary planning, the key elements involved, modern tools and technologies, and best practices for creating memorable and seamless travel experiences.

I. INTRODUCTION

Traveling offers countless opportunities for adventure, relaxation, cultural exploration, and personal growth. Yet, the success of a trip largely depends on careful and thoughtful planning. A well-organized travel itinerary serves as a roadmap for your journey, ensuring you make the most of your time, budget, and energy. It minimizes stress, optimizes your travel experience, and maximizes your chances of creating lifelong memories.

Significance of Travel Itinerary Planners:

The significance of a travel itinerary planner in the context of travel and tourism cannot be overstated. Travel itinerary planners play a pivotal role in enhancing the overall travel experience by providing several key benefits:

- **Time Efficiency:** A well-structured travel itinerary ensures that every moment of a trip is maximized. It helps travellers make the most of their limited time by outlining a clear plan for each day, leaving no room for confusion or indecision. This efficiency is especially valuable when visiting destinations with a lot to see and do.
- **Stress Reduction:** Traveling can be stressful, especially when exploring unfamiliar places. A comprehensive itinerary minimizes stress by removing the uncertainty of what to do next. It provides a sense of direction and control, allowing travellers to focus on enjoying the journey rather than worrying about logistics.

- **Optimized Budgeting:** Effective itinerary planning includes budget considerations, ensuring that travellers can manage their expenses effectively. It allows for advanced booking of accommodations, transportation, and activities, often resulting in cost savings due to early bird discounts and package deals.
- **Personalization:** Travel itinerary planners enable travellers to tailor their trips to their specific interests and preferences. It allows them to choose activities, attractions, and dining options that resonate with their individual tastes. This personalization ensures that the journey is not only memorable but also reflective of their unique travel style.
- **Experience Enhancement:** A well-organized itinerary ensures that travellers do not miss out on must-see attractions, events, or experiences. It enables them to make the most of their visit by scheduling visits to popular landmarks, attending cultural events, and engaging in local activities.
- **Safety and Preparedness:** Itineraries often include essential information such as emergency contact numbers, details of accommodations, and copies of important documents. This information ensures that travellers are well-prepared for any unexpected situations, making the journey safer and more convenient.
- **Cultural Immersion:** A thoughtful itinerary allows travellers to immerse themselves in the local culture. It can include visits to museums, historical sites, local markets, and opportunities to interact with locals. This cultural immersion adds depth and authenticity to the travel experience.
- **Flexibility:** While an itinerary is essential for planning, it should also allow for flexibility. It ensures that travellers can adapt to changing circumstances, explore spontaneous opportunities, or take a break when needed,

maintaining a balance between structured plans and serendipitous moments.

- **Documentation and Record-Keeping:** An itinerary serves as a valuable document for travellers. It keeps all relevant travel information in one place, making it easy to access reservation details, maps, and other essential documents. This level of organization is particularly useful for travellers who visit multiple destinations during their trip.
- **Efficient Navigation:** Itineraries can include maps and directions to various attractions and destinations. This feature is particularly useful when traveling to unfamiliar places. Navigation tools help travellers move around with ease and confidence, preventing them from getting lost.
- **Worry Reduction:** Knowing that every aspect of the trip is well-planned and accounted for reduces anxiety and worry. Travellers can focus on enjoying their journey instead of constantly fretting over the details.
- **Memorable Travel Experiences:** Perhaps most importantly, a well-constructed itinerary increases the likelihood of creating lasting memories. By efficiently managing time and resources, travellers can fully engage with their surroundings and create a deeper connection with the destination and its culture.

II. RELATED WORK

1. **Travel Planning Applications:** Numerous travel planning applications have emerged in recent years, aiming to simplify the process of creating detailed itineraries. Applications like TripIt, Google Trips, and Kayak allow users to consolidate travel information, including flight and hotel reservations, into a single platform. They offer features such as real-time flight updates, navigation, and recommendations for activities, making them indispensable tools for modern travellers.
2. **Online Booking Platforms:** Travellers are increasingly relying on online booking platforms like Expedia, Booking.com, and Airbnb to secure accommodations, flights, and activities. These platforms offer a wide range of options and often provide user reviews and ratings to assist in decision-making. They have streamlined the booking process, allowing travellers to plan and book their entire trips in one place, enhancing convenience and efficiency.
3. **Navigation and Mapping Tools:** Navigating through unfamiliar destinations has become

much easier with the advent of mapping and navigation applications such as Google Maps and Waze. These tools offer real-time GPS-based directions, traffic updates, and the ability to download maps for offline use. They are invaluable for travellers looking to explore cities and regions without the fear of getting lost.

4. **Personalization Algorithms:** The concept of personalization is at the forefront of travel planning applications. These tools employ sophisticated algorithms that take into account user preferences, previous travel history, and interests to generate personalized itineraries. They recommend activities, dining options, and attractions that align with an individual's unique tastes, making the travel experience more tailored and enjoyable.
5. **User-Generated Content:** User-generated content, found on social media platforms, travel blogs, and review websites, has played a significant role in shaping travel itineraries. Travellers often rely on the experiences and recommendations of fellow explorers to plan their trips. Platforms like TripAdvisor and Yelp have become valuable sources of information for travellers seeking authentic reviews and insights.
6. **Weather and Event Data Integration:** Travel planning applications have started integrating real-time weather and event data to enhance itineraries. These integrations allow travellers to make informed decisions about activities based on the current weather conditions and upcoming local events. By providing such information, these applications ensure that travellers can adapt their plans to the changing dynamics of their destination.
7. **Artificial Intelligence (AI) and Machine Learning:** AI and machine learning are being employed to improve travel recommendations and predictions. These technologies analyse vast datasets to offer travellers more accurate and personalized suggestions for accommodations, activities, and dining. AI-driven chatbots are also being used to provide instant customer support during the planning and travel phases.

Evaluation of Travel Itinerary Planning Applications

1: WanderLog

Problems Addressed:

- a. **Lack of comprehensive personalization features:** WanderLog aims to address the issue of

limited personalization in travel planning. Many users prefer customized itineraries based on their preferences and interests.

b. Lack of real-time updates on weather and events: This application recognizes the importance of real-time information to ensure travellers are aware of weather conditions and ongoing events during their trips.

Advantages:

a. Easy-to-use interface: WanderLog focuses on providing an intuitive and user-friendly interface for trip planning and organization, making it accessible to a wide range of users.

b. Visual elements: The website prioritizes visual elements, allowing users to showcase their travel experiences through photos and other visual content.

Disadvantages:

a. Lack of highly personalized itineraries: While addressing personalization, the existing system may not offer highly personalized itineraries to meet every user's specific preferences.

b. Impact of real-time updates: The absence of real-time updates on weather, events, and navigation can impact the accuracy of travel plans.

Gaps Identified:

The primary gap identified in WanderLog is the need for the integration of real-time data for weather forecasts and event schedules. This is essential for enhancing the accuracy and relevance of travel itineraries.

2: Itineree

Problems Addressed:

a. Incorporating user feedback: Itineree aims to address the issue of not effectively incorporating user feedback, which is valuable for improving the platform's features and usability.

b. Real-time updates on weather and events: Like WanderLog, Itineree recognizes the importance of real-time updates to provide users with the most current information during their travels.

Advantages:

a. Streamlined itinerary planning: Itineree offers a simplified itinerary planning process to reduce the complexity associated with travel planning.

b. User-friendliness: The website focuses on being user-friendly and accessible to travellers from diverse backgrounds.

Disadvantages:

a. Missed attractions: The system may not cover all attractions, potentially leading to missed opportunities for travellers.

b. Lack of interactive feedback features: Itineree lacks features that allow users to provide feedback and share their experiences and suggestions.

c. Real-time data updates: The absence of real-time data updates may affect the relevance of the itineraries generated by the platform.

Gaps Identified:

Itineree does not aim to include a wide range of attractions, including lesser-known gems, and it lacks a user feedback feature, which could be valuable for enhancing the user experience.

3: TripPlannerX

Problems Addressed:

a. Lack of advanced personalization: Trip PlannerX addresses the need for advanced personalization features to cater to diverse user preferences.

b. Integration of real-time data: Similar to the previous applications, TripPlannerX recognizes the importance of integrating real-time data on weather and events.

Advantages:

a. Customization options: The platform offers customization options to accommodate individual preferences and schedules.

b. Travel insights and recommendations: TripPlannerX provides travel insights and recommendations based on user data, enhancing the planning experience.

c. Easy and intuitive platform: It aims to provide a user-friendly and intuitive platform for creating travel itineraries.

Disadvantages:

The primary disadvantage of TripPlannerX is the lack of real-time updates, which can impact the accuracy of travel itineraries.

Gaps Identified:

The identified gap is the need for real-time data integration, specifically for weather and navigation, to enhance the accuracy and reliability of travel plans.

4: WanderPlan

Problems Addressed:

a. Limited options for tailoring itineraries: WanderPlan aims to address the issue

of limited options for customizing itineraries to meet specific user preferences.

b. Lack of real-time updates: Similar to other applications, WanderPlan acknowledges the need for real-time updates on weather and events to improve the accuracy of plans.

Advantages:

a. Pre-designed itinerary templates: WanderPlan offers pre-designed itinerary templates for quick planning, making it convenient for users.

b. Smooth planning process: The platform ensures a smooth and efficient planning process for travellers.

c. Sharing experiences and insights: WanderPlan provides a platform for travellers to share their experiences and insights with the community.

Disadvantages:

a. Lack of customization: The existing system may not provide sufficient customization options for itineraries.

b. Impact of real-time updates: The absence of real-time updates on weather, events, and navigation can affect the accuracy of itineraries.

Gaps Identified:

The identified gap in WanderPlan is the need for the integration of real-time data to provide accurate updates on weather, events, and navigation for more precise travel planning.

5: TripCase

Problems Addressed:

a. Challenges for new users: TripCase acknowledges the challenges that new users, unfamiliar with the platform's features and interface, may face.

b. Limited personalization: The platform recognizes the need to address limited personalization options, which can result in less tailored itineraries.

c. Lack of real-time data: Like other applications, TripCase highlights the absence of real-time data on weather, events, and navigation, impacting the accuracy of itineraries.

Advantages:

a. Consolidation of travel-related information: TripCase offers a feature for consolidating travel-related information in one place, making it easier for travellers to manage their plans.

b. Alerts and notifications: The platform provides alerts and notifications to keep travellers informed

about their plans, ensuring a smoother travel experience.

c. User experience: TripCase aims to create a smooth user experience for managing travel details.

Disadvantages:

a. Lack of highly personalized itineraries: The existing system may not offer highly personalized itinerary suggestions.

b. Challenges for new users: New users may find it challenging to navigate and fully utilize the platform's capabilities.

c. Impact of real-time updates: The absence of real-time updates affects the reliability of the provided itineraries.

Gaps Identified:

The gaps identified in TripCase are the lack of a user-friendly interface, especially for newcomers, and the absence of real-time data to enhance itinerary accuracy.

Proposed System:

Travelling is a cherished and transformative experience for people from all walks of life. It allows individuals to explore new destinations, cultures, and cuisines, creating memories that last a lifetime. However, the process of planning a trip can be overwhelming, often requiring extensive research, coordination, and decision-making. To simplify this process and enhance the overall travel experience, we propose "**VoyageVue: a comprehensive Smart Travel Itinerary Planner system.**"

System Overview:

The Travel Itinerary Planner, which we have named "**VoyageVue**" is designed to empower travellers by providing a one-stop solution for creating personalized travel itineraries. **VoyageVue** simplifies the journey from trip conception to execution, enhancing efficiency, convenience, and enjoyment. This innovative system offers a range of features to cater to the diverse needs of travellers and ensure their trips are well-planned, tailored to their preferences, and adaptable to real-time changes.

Key Features:

Personalized Itineraries: **VoyageVue** allows users to create customized travel plans tailored to their unique preferences and requirements. Users can specify their travel dates, budget, and travel style, and the system's intelligent algorithms suggest attractions and activities that align with their interests.

Real-Time Updates: The system integrates real-time data on weather conditions and local events. Users can access live weather forecasts, ensuring they are prepared for changing weather patterns. Additionally, they receive updates on upcoming events at their destination, ensuring they don't miss out on unique experiences.

Interactive Mapping: VoyageVue includes dynamic maps with navigation routes, making it easier for travellers to explore their chosen destinations. Users can plan routes, locate nearby attractions, and receive real-time directions, improving navigation and exploration.

Collaborative Planning: The system supports collaborative planning for group trips. Users can invite their travel companions to join them on shared itineraries, promoting seamless coordination and shared experiences.

User Feedback and Reviews: VoyageVue encourages users to leave feedback and reviews about attractions, accommodations, and their

overall travel experiences. This feedback is invaluable for other users seeking recommendations and insights.

Benefits:

Efficiency: VoyageVue streamlines the travel planning process, saving users time and effort by offering recommendations based on their preferences.

Confidence: Real-time data and personalized recommendations boost user confidence in their travel plans, helping them make informed decisions.

Accessibility: The user-friendly interface ensures that travellers of all technical backgrounds can use the system with ease.

Community: VoyageVue fosters a sense of community among travellers, encouraging them to share their experiences and insights, creating a vibrant ecosystem of travel enthusiasts.

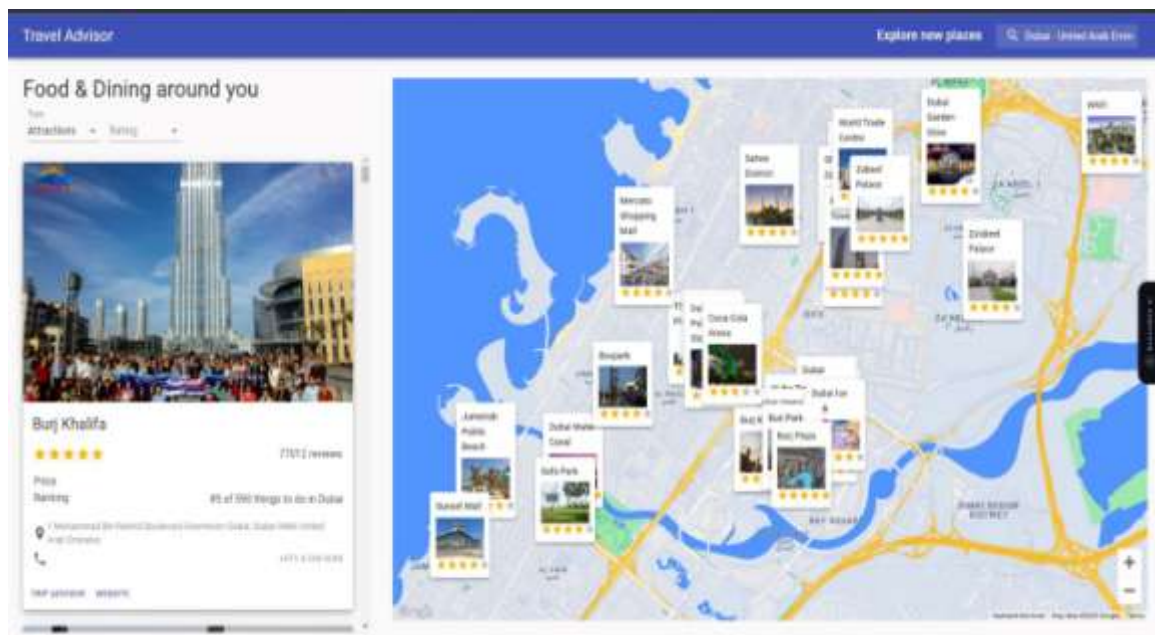


Fig 1. Home Page

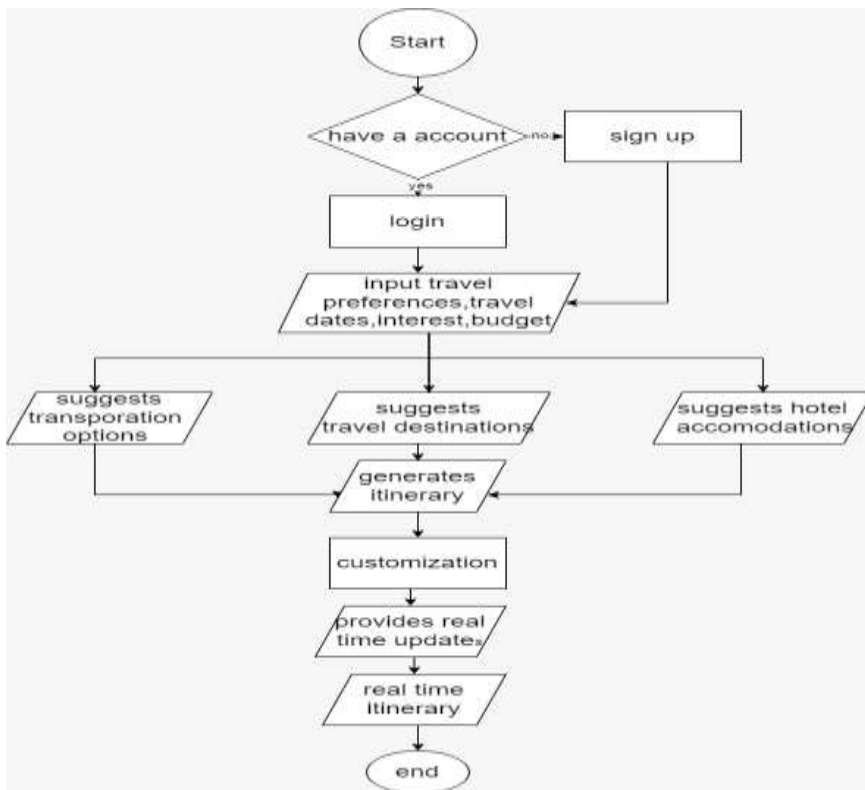


Fig 2: Flowchart

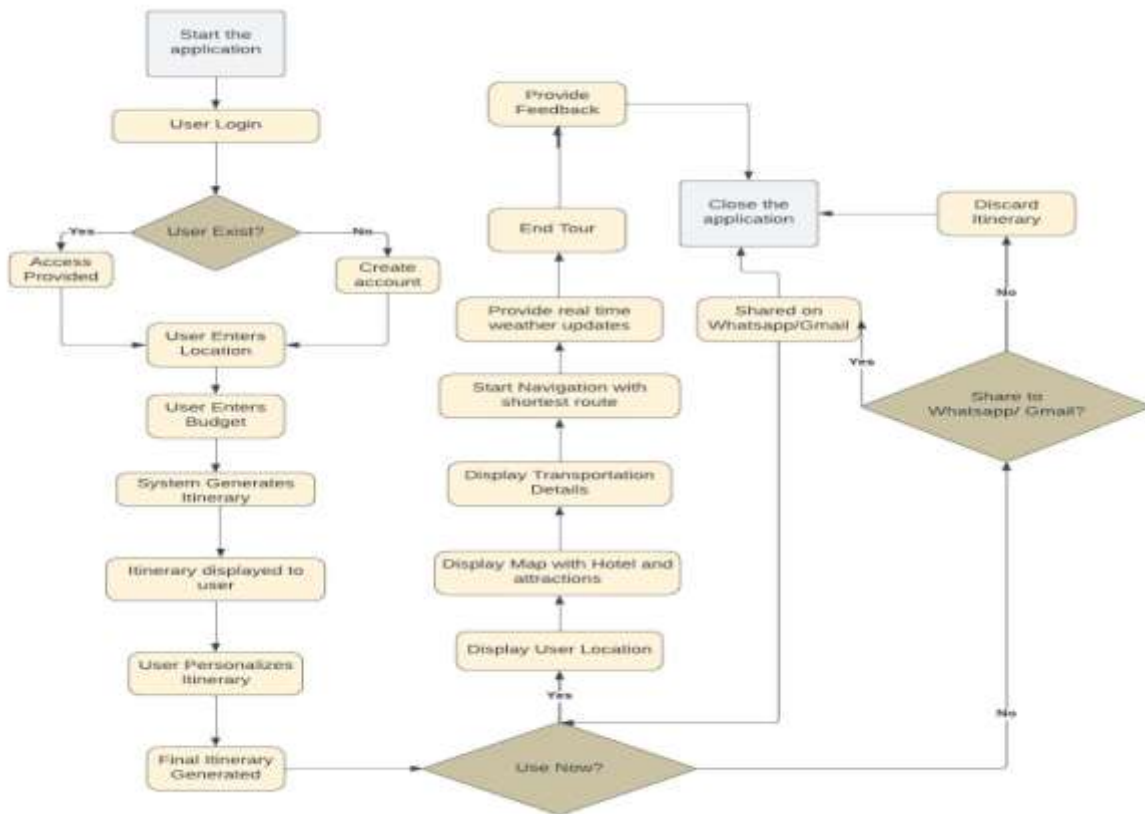


Fig 3: Block Diagram

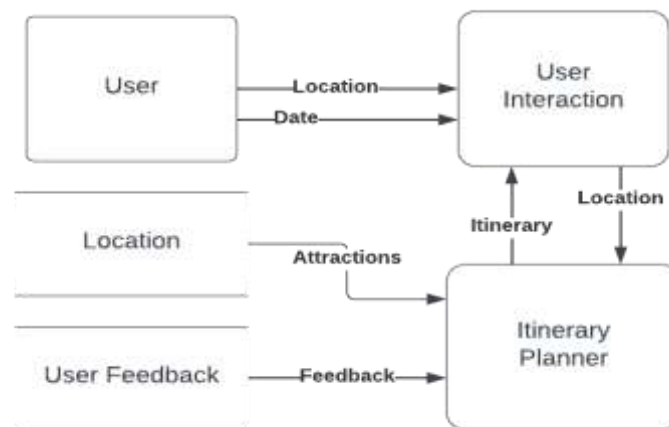


Fig 4: Dataflow Diagram Level 0

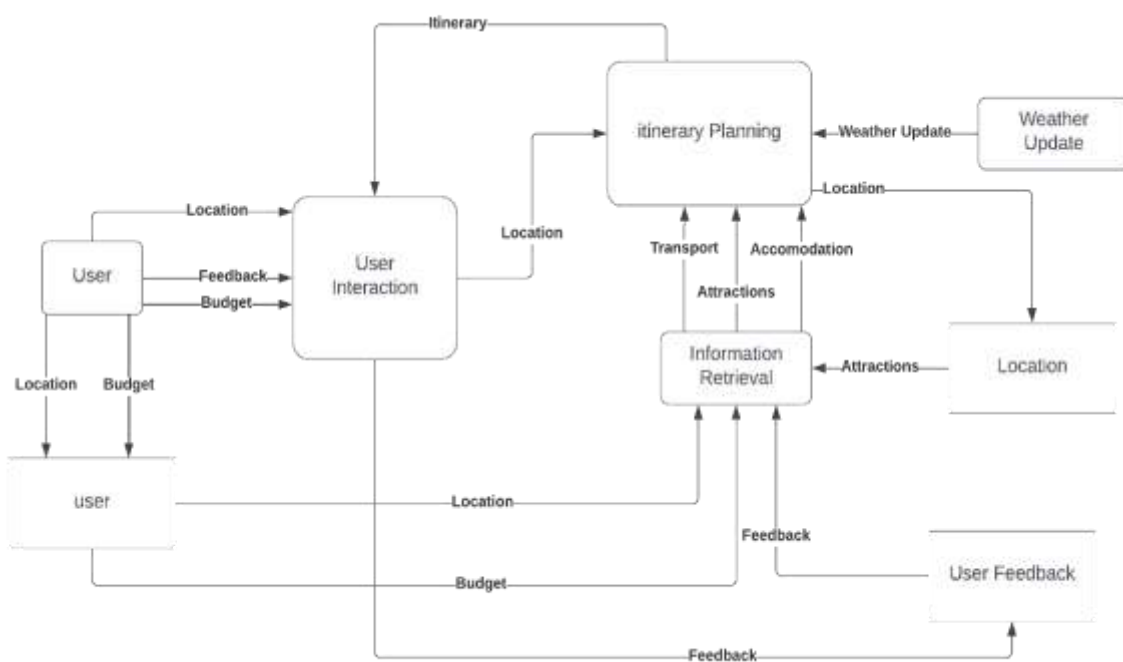


Fig 5: Dataflow Diagram Level 1

III. CONCLUSION

In conclusion, **VoyageVue** application plays a crucial role in simplifying the travel experience for users. It addresses common challenges such as limited personalization options and the absence of real-time updates on weather, events, and navigation. The application offers user-friendly interface, streamlined planning processes, and the ability to consolidate travel-related information.

Additionally, this application has a feature for feedback sharing and the inclusion of a wide range of attractions, including lesser-known gems. Incorporating user feedback and providing a platform for travellers to share their experiences and insights greatly enriches the planning process and the overall travel community.

Thank you for considering our survey report.

REFERENCES:

- [1]. International Journal of Engineering and Management Research, A Travel Itinerary Planner, 2022
- [2]. User-adapted travel planning system for personalized schedule recommendation, Taichung University of Science and Technology 2019
- [3]. WonderPlan, Travel Itinerary Website. Link: <https://wonderplan.ai/>
- [4]. Documentation on Node.js, Express.js and APIs. Link: <https://expressjs.com/>
Link: <https://developers.google.com/maps>