

Study of Auditorium

Shailesh C. Tompe (Student), Ar. SnehalVidhale Mam

P.R.Patil College Of Architecture, Amravati, India

Submitted: 15-06-2022

Revised: 20-06-2022

Accepted: 25-06-2022

ABSTRACT

Aesthetics and acoustics are one of the most commanding rules in the process of designing an auditorium. Due to the anticipated presence of a large gathering of people, it is necessary to make sure that the flooring is comfortable and prevents any accidents caused by excessive friction. Carpets play a significant role in cinema safety.

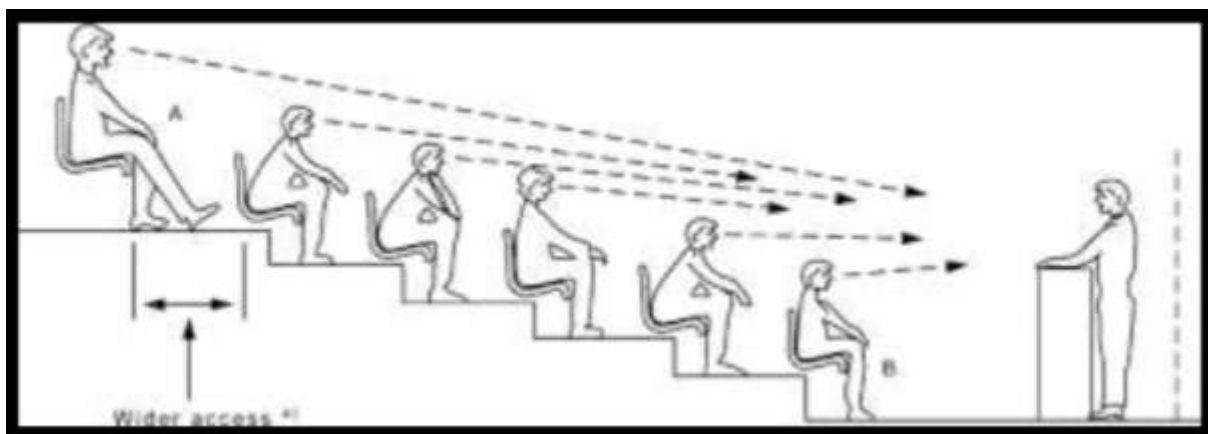
It works alongside stair nosing in making sure there is very little risk of accidents and/or injuries transpiring on a dark cinema interior. Carpets are soft and mostly cushioned and will definitely break a hard fall hence minimize any injury in case an unfortunate incident occurs. Besides, it prevents sounds from reflecting echos AKA its acoustic ability. Sounds quite a heavy task for a flooring. But we bring to you, Acoustic flooring such as carpets and vinyl with underlays is an outstanding floor sound absorptive material. They absorb sound as efficiently as many specialized acoustical materials. We are Auditorium Works, Our company is one of the exceptional leading facilitating services accumulating a Portfolio of Auditorium designing and Acoustic treatment. we are determined to provide an eye-catching view for every angle inside the auditorium, also the floor.

therefore we initiate to provide you with a comprehensive solution of custom made wall to wall carpets that has excellent resistance and durability. Our product rely over design and innovation techniques that are sustainable and environment-friendly.

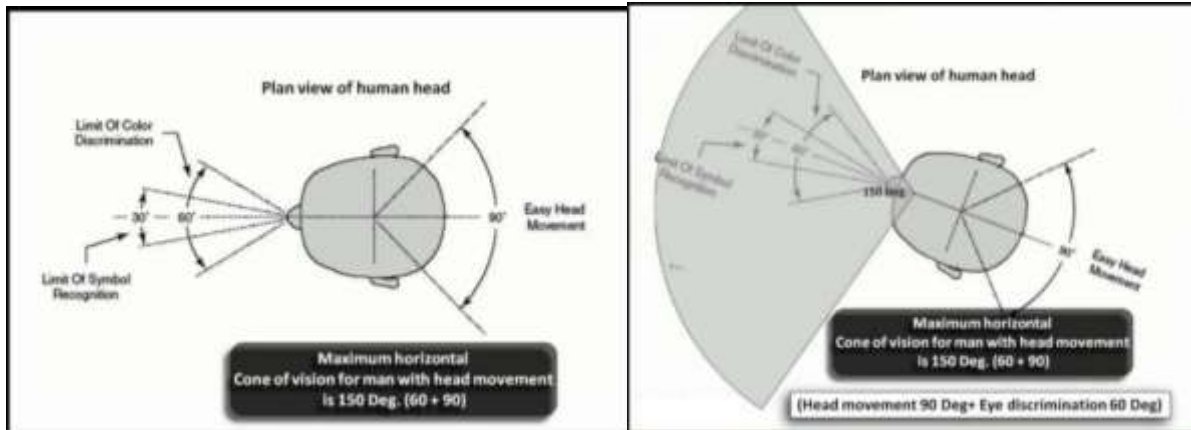
I. LITERATURE REVIEW WITH SUMMERY

FLOORS

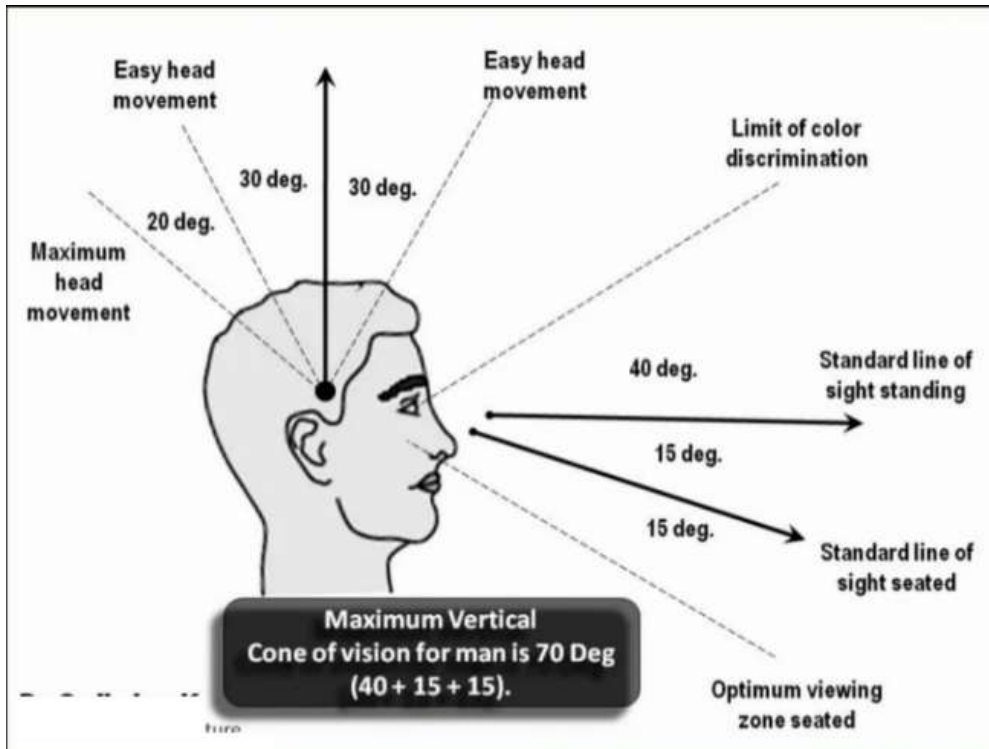
- For good visibility as also for good listening conditions, the successive rows of seats have to be raised over the preceding ones with the result that the floor level rises towards the rear.
- The elevation is based on the principle that each listener shall be elevated with respect to the person immediately in front of him so that the listener's head is about 12 cm above the path of sound which would pass over the head of the person in front of him. It is possible to reduce this to 8 cm, if the seats are staggered.
- As an empirical rule the angle of elevation of the inclined floor in an auditorium should not be less than 8 degrees

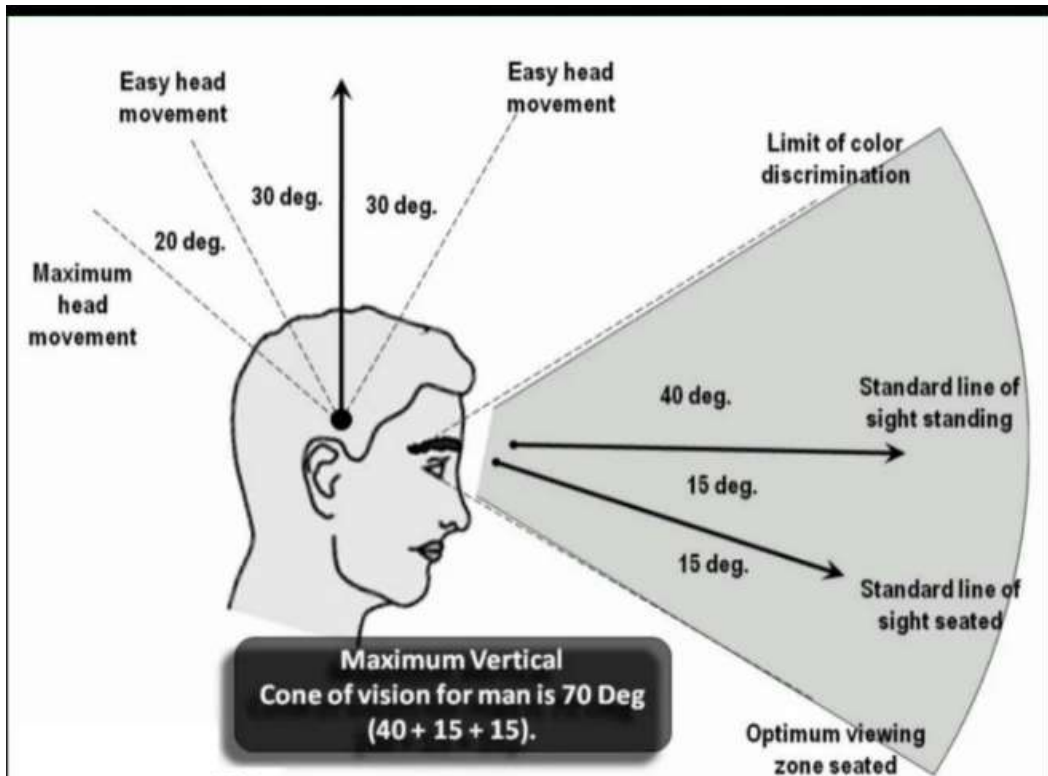


Horizontal cone of vision



Vertical Cone Of Vision





II. METHODOLOGY

Wood flooring is any product manufactured from timber that is designed for use as flooring, either structural or aesthetic purpose. This type of flooring is generally used for special purpose door, live the auditorium doc to a reflective nature.

Wood is a common choice as a flooring material and can come in various styles. The type of wood flooring used in MBSA Auditorium is solid hardwood flooring.

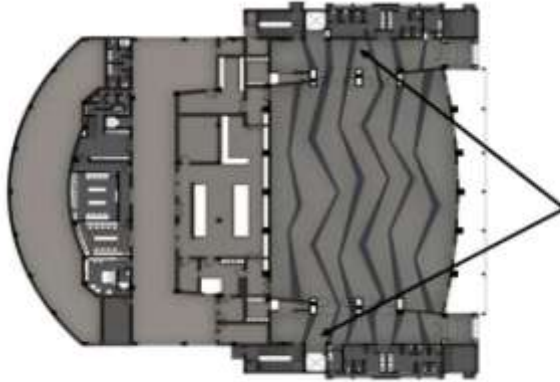
Solid hardwood floors are made of planks milled from a single piece of timber. Solid wood floors have a thicker wear surface and can be sanded and finished more times an engineered wood floor.

III. CASE STUDY

- At the back stage there is a 6m wide corridor.
- Beside this corridor various spaces such as
 1. conference rooms
 2. lift lobby



FOYER



DETAILS

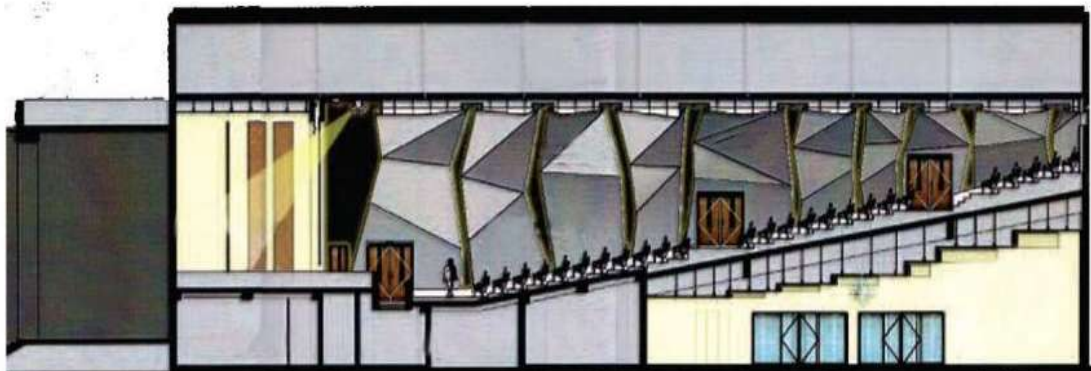
- Distance Between Seats And Stage: 4.2 M
- Height Of The Ceiling:
3.5 M In The Last Row

7.2 M From The First Row

6.5 M From The Stage

- Distance Between Each Row (Seating): 0.50 M

SECTION



REFERENCES –

- [1]. www.auditoriumlibrarystudy.com
- [2]. www.prashantrk03/auditorium-53033254
- [3]. [/www.researchgate.net/publication/267554113_Stage_acoustics_-_Literature_review](http://www.researchgate.net/publication/267554113_Stage_acoustics_-_Literature_review)
- [4]. www.wikipedia.org